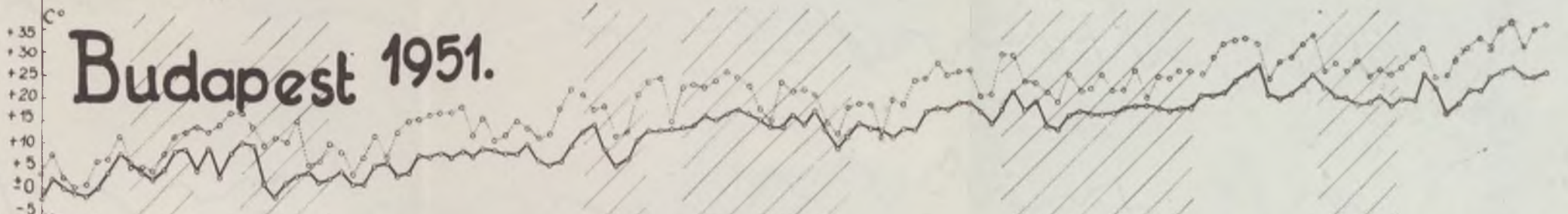
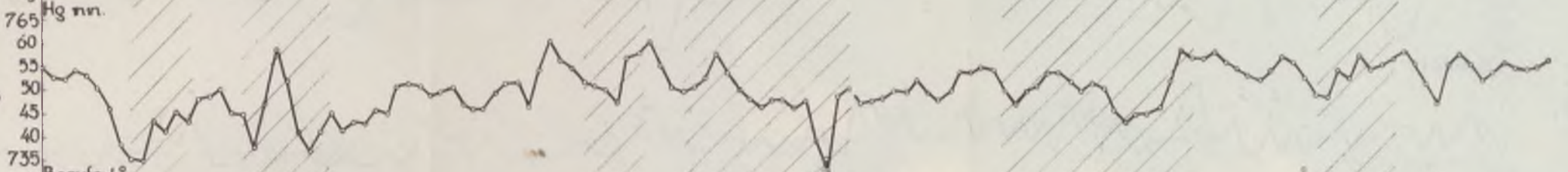


Budapest 1951.

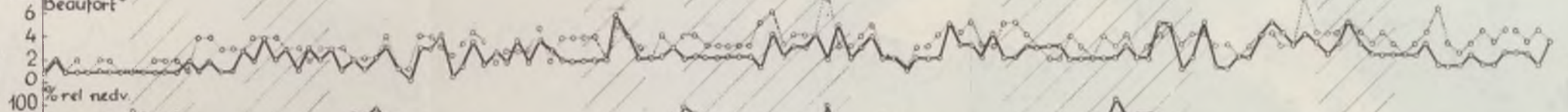
1.



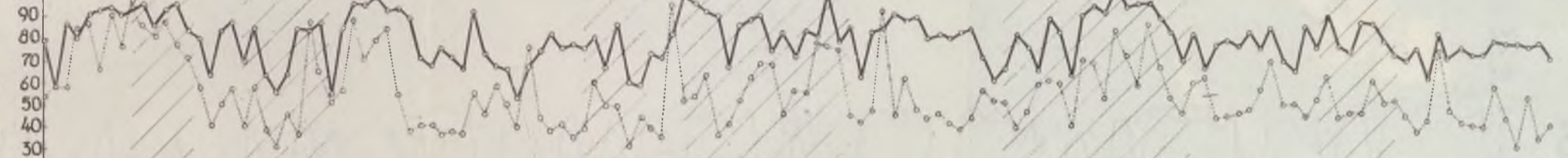
2.



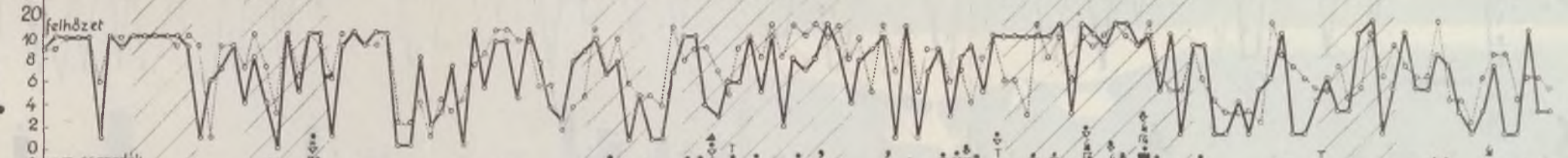
3.



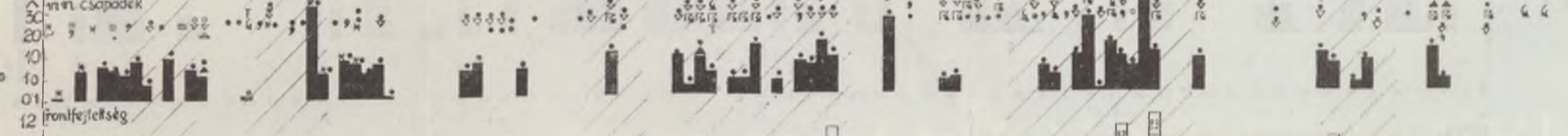
4.



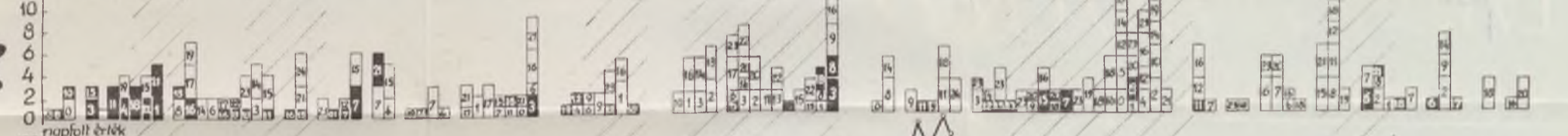
5.



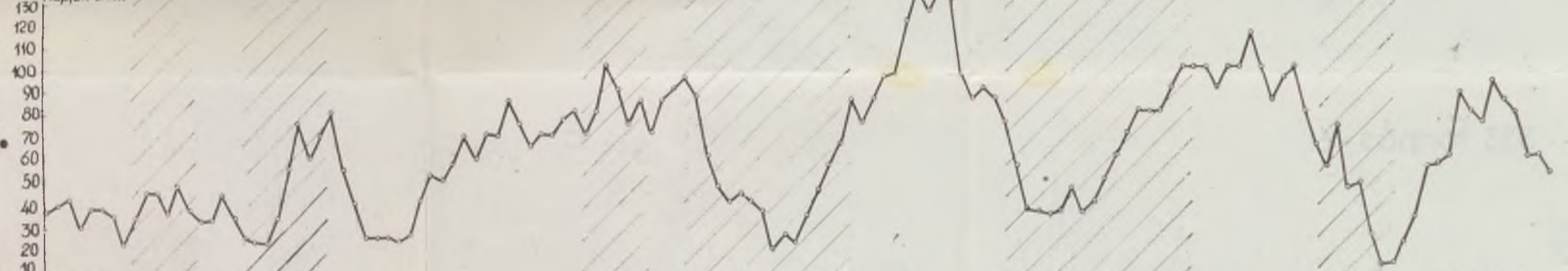
6.



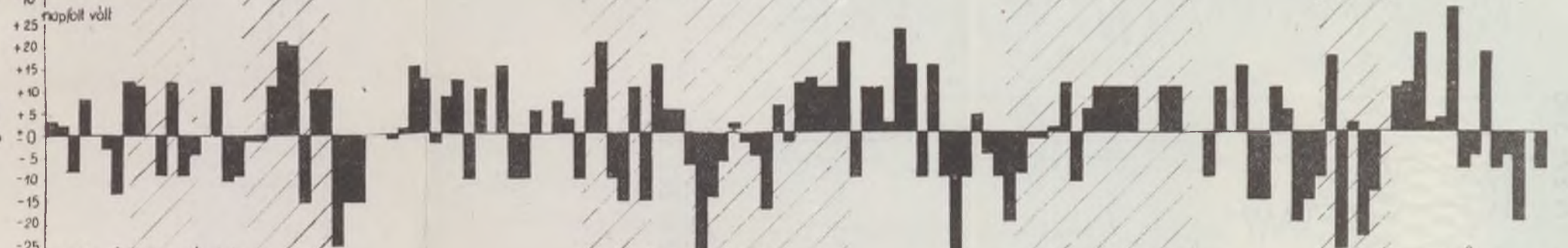
7.



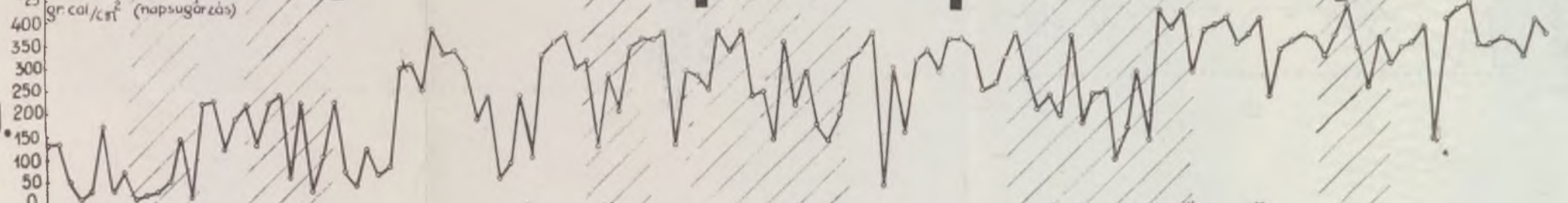
8.



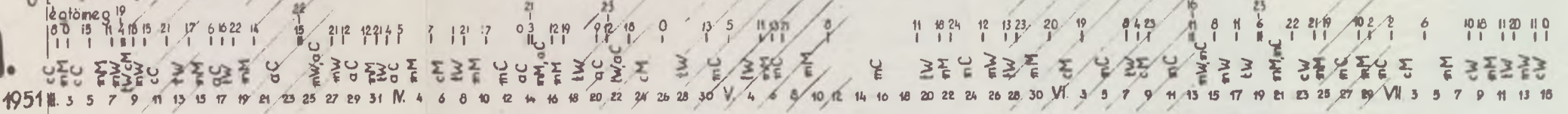
9.



10.



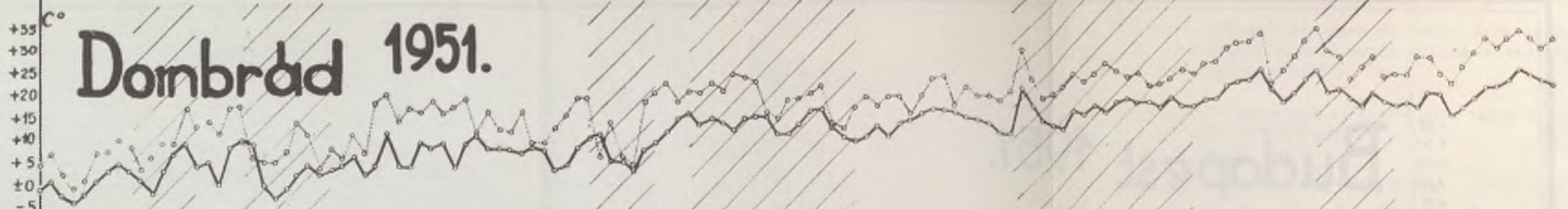
11.



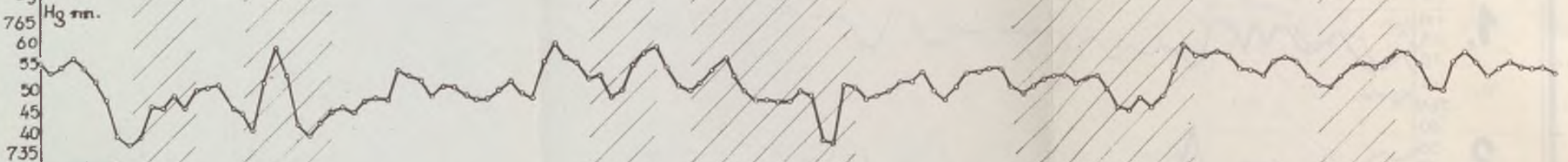
1951. I. 3 5 7 9 11 13 15 17 19 21 23 25 27 29 31. II. 4 6 8 10 12 14 16 18 20 22 24 26 28 30. V. 4 6 8 10 12 14 16 18 20 22 24 26 28 30. VI. 3 5 7 9 11 13 15 17 19 21 23 25 27 29. VII. 3 5 7 9 11 13 15

Dombbrád 1951.

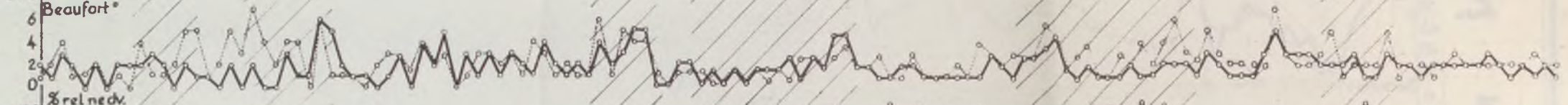
1.



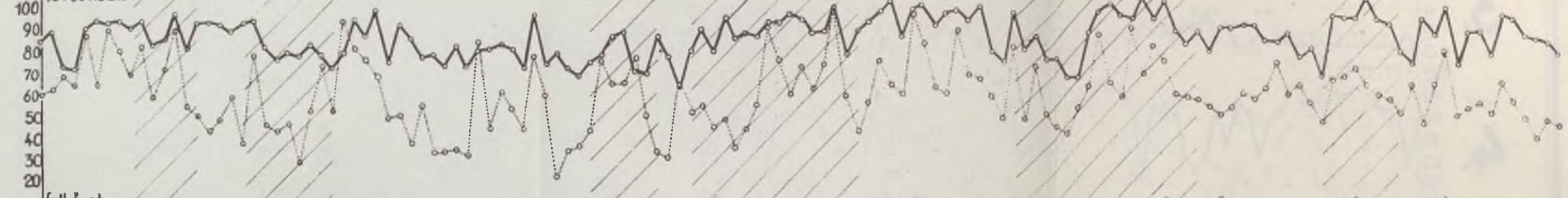
2.



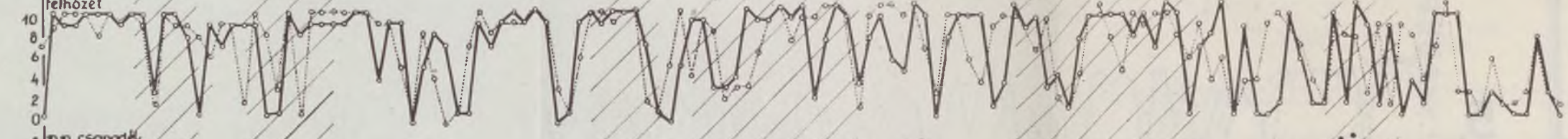
3.



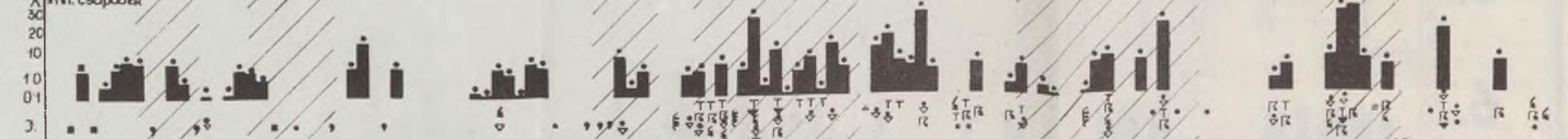
4.



5.



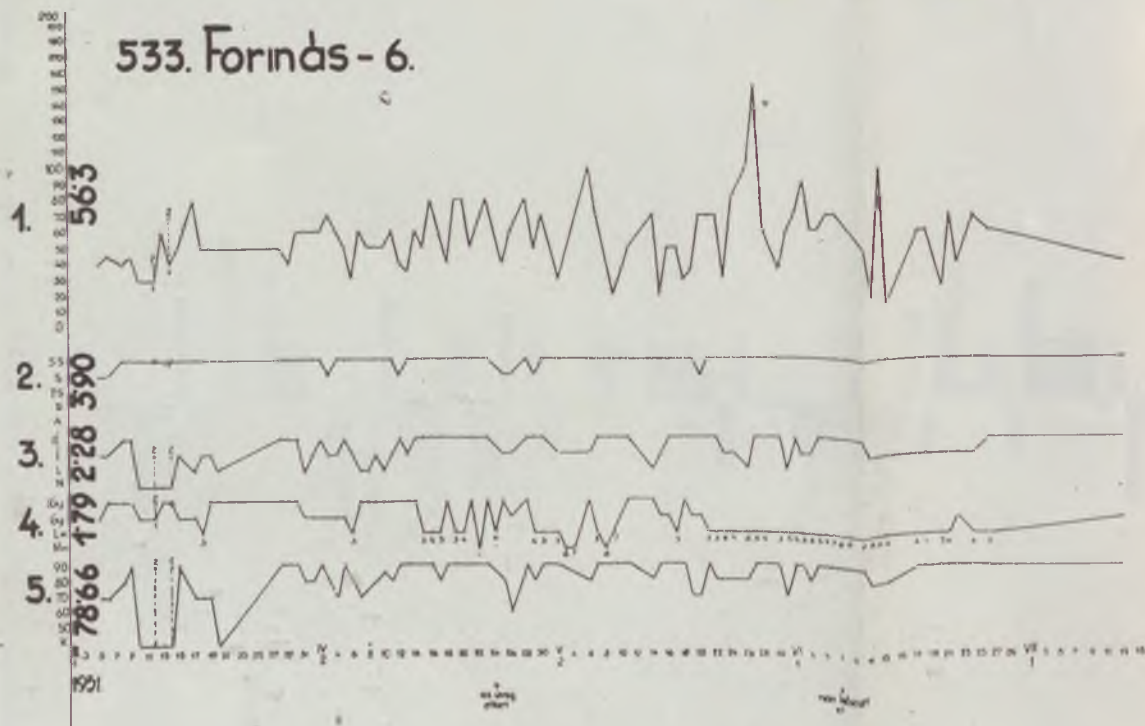
6.



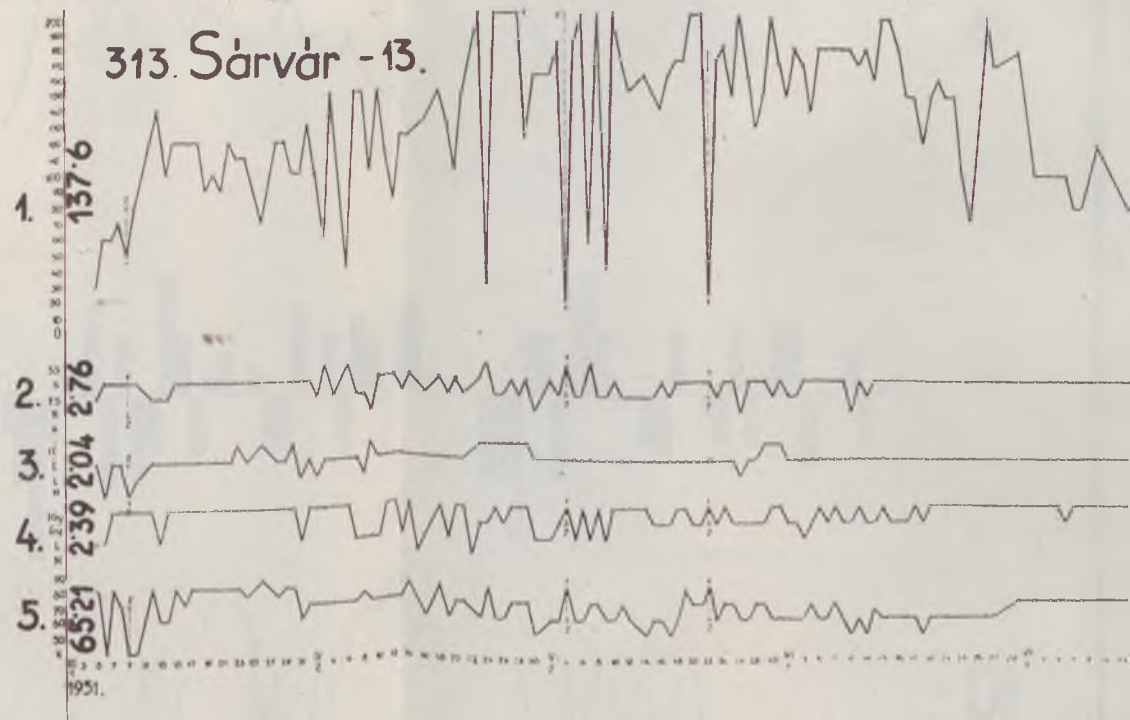
III. 3 5 7 9 11 13 15 17 19 21 23 25 27 29 31 IV. 4 6 8 10 12 14 16 18 20 22 24 26 28 30 V. 4 6 8 10 12 14 16 18 20 22 24 26 28 30 VI. 3 5 7 9 11 13 15 17 19 21 23 25 27 29 31 VII. 3 5 7 9 11 13 15

1951.

3. ábra



4. ábra



1 2 ábrák magyarázata

3 sor: Beaufort ° - a szél erőssége fokokban

5. sor: 0 = teljesen felhőtlen égbolt
 5 = az égbolt felereszben felhőkkel fedett
 10 = teljes borultság (az egész égboltot felhők borítják)

6. sor: * = hó, • = eső, ♦ = szélhó, ☁ = záporosó, ☂ = záporoszerű
 havazás, ▲ = jégeső, ☐ = dér, ☐ = köd, ☘ = havazás, ☐ = por-
 felhő, ☐ = villágás, ☐ = mennydörgés, ☐ = zivatar.

☐ = gyenge	} nyeltségű	☐ = belorési (hideg)	} frontok
☐ = közepes		☐ = felsiklói (meleg)	
☐ = erős			

A fronterősséget ábrázoló idomokban a számok (☐, ☐) a front uralomra jutásának óráját jelentik.

9 sor: Az oszlopok az összegezett napfaltertékek eltérését szemléltetik az előző naphoz viszonyítva

11 sor	a = sarkvidéki	} eredetű	C = hideg	} légtömegek
	c = szárazföldi		M = mérsékelt	
	m = tengeri		W = meleg	
	t = szubtrópusi			